



worcestershire
county council

**BUDGET
2006/07 AND BEYOND**

Revenue Support Grant Headlines

- No change in arrangements for Area Cost Adjustment
- Funding announced for two years.
- Schools funded by new Dedicated Schools Grant

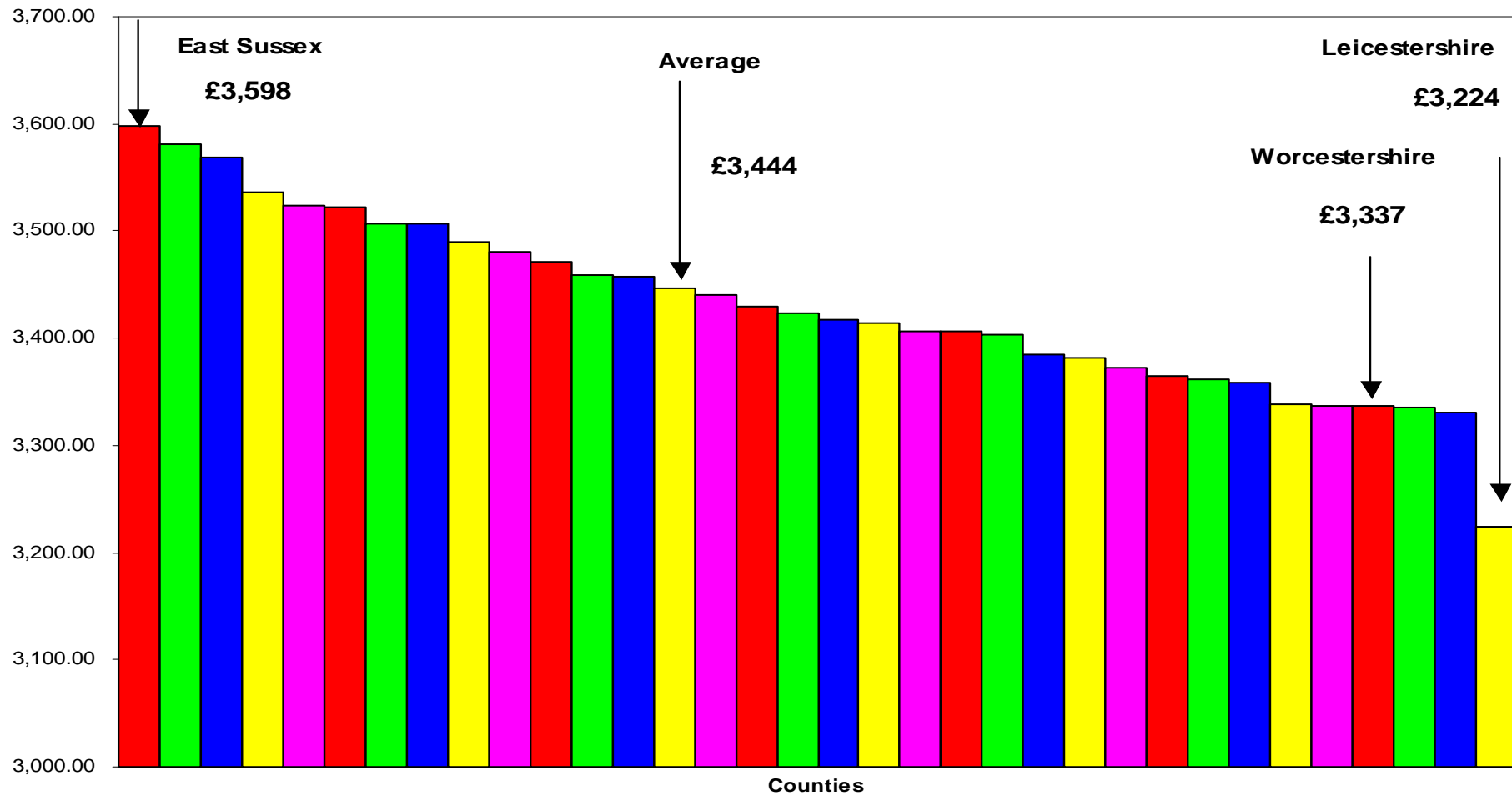
- New RSG formula for distribution of grant
 - 2.0% in 2006/07
 - 2.7% in 2007/08

- Damping effects of formula

County Councils' grant increases 2006/07 before & after floor damping



DEDICATED SCHOOLS GRANT AMOUNT PER PUPIL – SHIRE COUNTIES



Budget 2006/07 - Funding

	£M
Dedicated Schools Grant	259.2
Revenue Support Grant	69.7
Collection Fund surplus	1.1
Council tax	184.2
Use of Reserves	<u>4.6</u>
	<u>518.8</u>

Budget 2006/07 - Expenditure

	Dedicated Schools Budget £m	Non Schools Budget £m	Total £m
Original Budget 2005/06	242.4	244.6	487.0
Add Specific grant switched To formula/DSG	2.3	2.4	4.7
	<hr/>	<hr/>	<hr/>
	244.7	247.0	491.7
Increase 2006/07	14.5	12.6	27.1
	<hr/>	<hr/>	<hr/>
Total	259.2	259.6	518.8
	<hr/>	<hr/>	<hr/>

Analysis Non Schools Increases

	£m
Inflation	
Pay awards	4.2
Pension Fund – employers increase	0.7
Gas and Electricity	0.4
Street lighting energy	0.7
Road maintenance	1.0
Home to school transport	0.7
Other price increases	<u>3.3</u>
	11.0

Analysis Non Schools Increases 2.

	£m	£m
Inflation		11.0
Other changes		
Waste disposal	1.7	
Capital programme financing costs	1.5	
Safeguarding children – grant discontinued	0.6	
Learning disability – new clients	0.6	
Other	-0.4	
Adult Social care efficiencies	-0.6	
Roads maintenance	-1.4	
Reduce staff and management costs	-0.3	
Procurement	-0.4	
Advertising and staffing economies	-0.4	
Detrunking A38 grant	- 0.3	
Invest to save contingency	0.7	
Repairs to footways	<u>0.3</u>	
		1.6
		<u>12.6</u>

Capital Programme Summary

<u>DIRECTORATE ESTIMATES</u>	2006/07	2007/08	2008/09 and Beyond
	£000	£000	£000
Children's Services Directorate	57,454	33,898	187,255
Environmental Services Directorate	17,760	14,549	17,362
Adult & Community Services Directorate	3,185	712	650
Corporate Services Directorate	7,725	2,542	1,835
Planning, Economy & Performance Directorate	400	400	0
Financial Services Directorate	4,000	3,500	2,500
	90,524	55,601	209,602
<u>FINANCING</u>			
Borrowing	60,397	33,277	82,646
Capital Receipts	7,748	3,000	8,683
Government Grants & Third Party Contributions	17,909	15,324	114,050
Revenue Budgets	4,470	4,000	4,223
	90,524	55,601	209,602

Financial Plan 2007/08 to 2009/10

	2007/08	2008/09	2009/10
	£M	£M	£M
Recurring Finance			
Revenue Support Grant	71.1	72.5	74.0
Council Tax	193.7	203.8	212.4
	<hr/>	<hr/>	<hr/>
	264.8	276.3	286.4
Recurring expenditure	273.4	279.4	289.9
	<hr/>	<hr/>	<hr/>
	8.6	3.1	3.5
Funding Strategy			
Cost reduction target	-3.5		
Cashable efficiency	-3.5	-3.5	-3.5
	<hr/>	<hr/>	<hr/>
Use of Balances	1.6	-0.4	0.0
	<hr/>	<hr/>	<hr/>

Example of the Services provided by the County Council

- 79,000 Children each get 1100 hours of tuition
- 16,500 older people and children in our care
- 2,463 miles of roads
- 57,000 street lights (which includes Road signs & Bollards)
- 3,000 miles of public rights of way
- 200 bus routes subsidised
- 10 kilos of waste per household each week
- 10,000 complaints to Trading standards
- 1 million books from 23 libraries