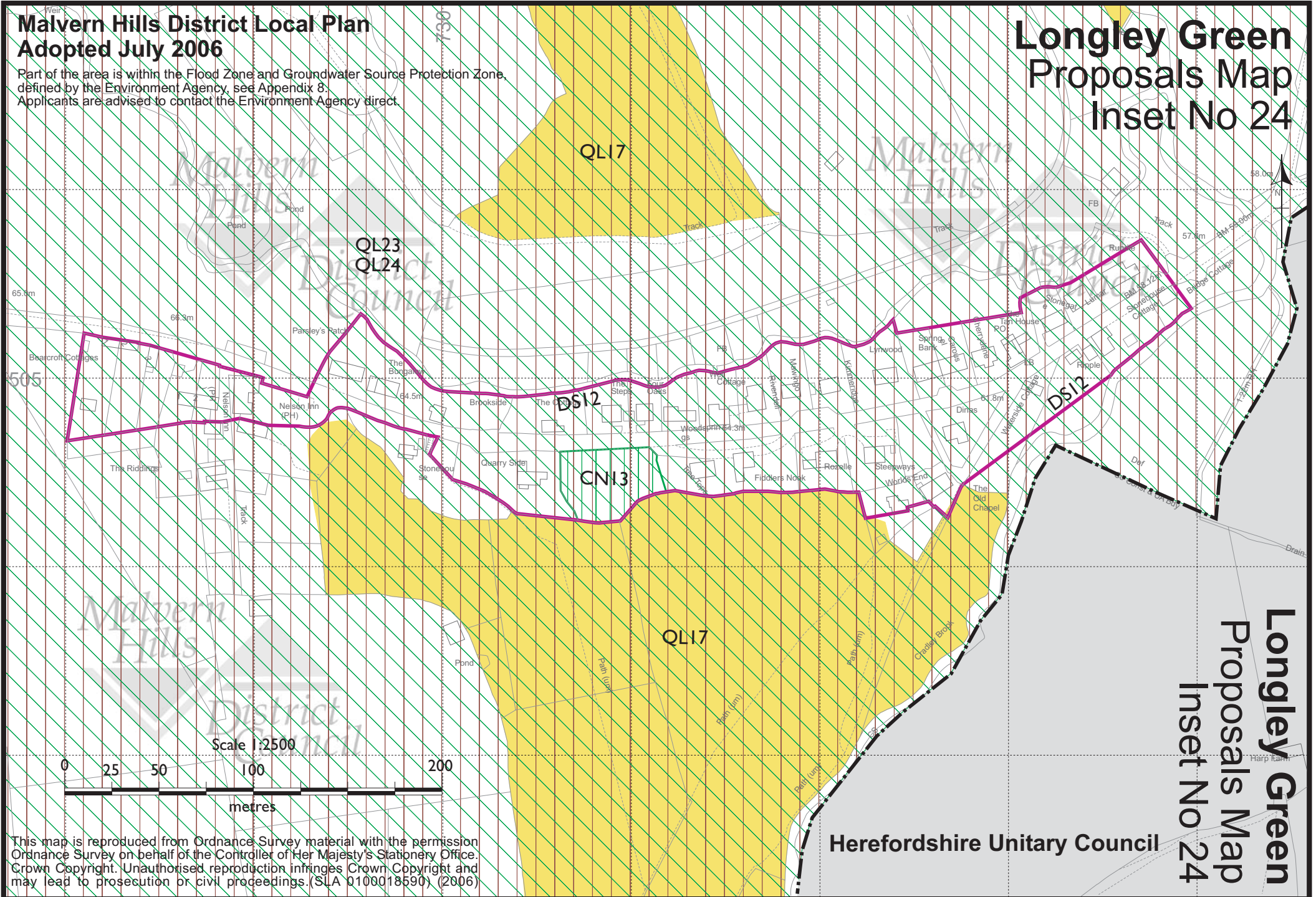


Malvern Hills District Local Plan Adopted July 2006

Part of the area is within the Flood Zone and Groundwater Source Protection Zone, defined by the Environment Agency, see Appendix 8. Applicants are advised to contact the Environment Agency direct.

Longley Green Proposals Map Inset No 24



This map is reproduced from Ordnance Survey material with the permission of Ordnance Survey on behalf of the Controller of Her Majesty's Stationery Office. Crown Copyright. Unauthorised reproduction infringes Crown Copyright and may lead to prosecution or civil proceedings. (SLA Q100018590) (2006)

Herefordshire Unitary Council

Longley Green
Proposals Map
Inset No 24